

CROWN

C-5 SERIES



Pushing Limits Inside and Out

The Crown C-5 Series redefines LPG, with breakthrough innovation. From its high-performance powertrain to precise cooling, ergonomic design and intrinsic stability, the C-5 Series sets new standards across the board.

Customers demanded a better IC truck – with the power, control and reliability to perform in the most demanding applications, year after year – and the Crown C-5 Series delivers. We're pushing limits, so you can too.

Achieve Revolutionary Results With Crown



Superior Design Breakthrough Performance

Crown spent thousands of hours understanding customer needs, testing trucks in demanding indoor and outdoor applications and overcoming the most persistent problems that plague typical gas trucks. The result is a completely reinvented experience: The Crown C-5 Series.



Strength

With a true industrial powertrain and superior cooling, the C-5 Series is designed to deliver.



Control

The C-5 Series is designed inside and out for optimal comfort, confidence, stability and safety, so operator productivity can keep pace with truck performance.



Reliability

Less maintenance, a longer lifespan and dependable uptime add up to a lower cost of ownership and better lifetime value with the proven C-5 Series.

Visit crown.com

See the C-5 Series



Engineered to Deliver Pure Power

Crown's 2.4-litre, 4-cylinder engine delivers 59 horsepower and is compliant with the latest emission regulations. A revolutionary engine with a long lifespan and fewer service intervals.

Rugged Performance Features

70 Amp Alternator

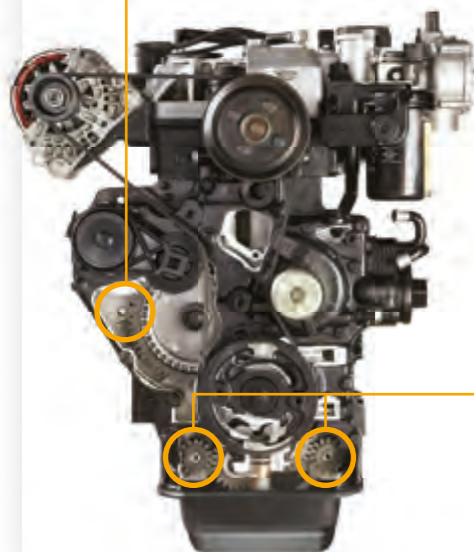
A high-power 70 amp alternator provides ample energy to keep the battery charged and all accessories running.

Heavy-Duty, Serpentine-Style Belt with Auto Tensioner

A wide, durable, multi-ribbed belt with auto tensioner eliminates the need to manually adjust engine components to maintain tension, which prolongs belt and component life.

Gear-Driven Valve Train

A robust, gear-driven valve train eliminates the stretching and maintenance that can occur with the chains and belts in typical gas engines.



Engine Balancing

Internal balancing shafts and rubber engine mounts virtually eliminate engine vibration, enabling smoother performance and greater operator comfort.

Unmatched Cooling Features

Cast Iron Cylinder Head

The C-5 Series' rugged, cast iron cylinder head provides up to 60 percent better heat resilience than typical aluminium heads, reducing warpage and increasing lifespan.

Oil Cooler and 7.6 Litre Oil Capacity

A 7.6 litre oil pan and external oil cooler help reduce oil temperatures. These standard features help maintain oil viscosity, extending engine life and allowing 1,000 hour oil change intervals.

1,000
hour oil change

Unmatched Powertrain Durability

The C-5 Series' industrial engine and hydrodynamic transaxle are designed and manufactured to deliver more power and longevity.

Rugged, High-Performance Components

High-Temperature Seals Throughout

The C-5 Series transaxle uses high temperature Viton seals and O-rings which prolong life, avoiding leaks for optimal component protection.

Robust Cast Iron Housings

Rugged cast iron transmission and axle housings provide thermal and impact protection.

Twice the Cooling

A powertrain is only as good as its cooling system. Crown's standard industrial dual radiator provides separate cooling for the engine and transmission. This design lowers overall fluid temperatures which protects and extends powertrain life.



Large Capacity Industrial Transmission Filter

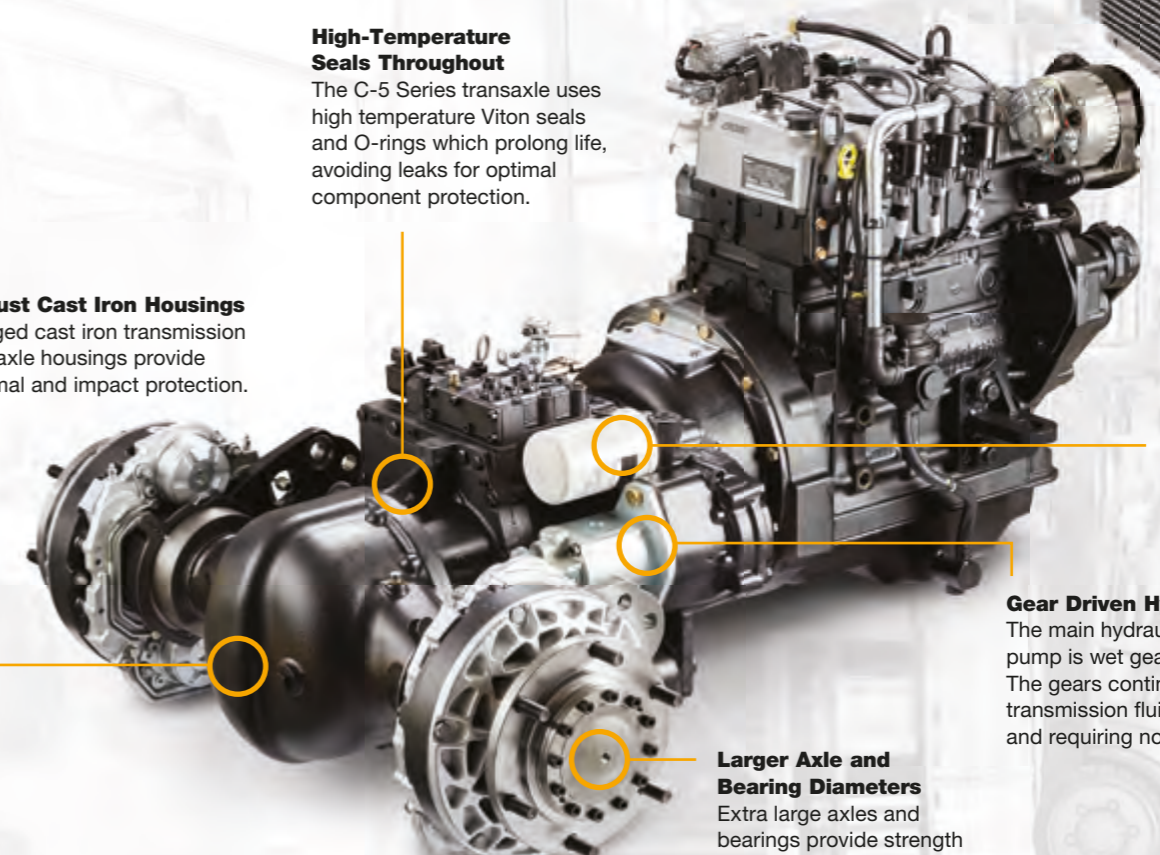
The dual radiator keeps the transmission fluid cool, the large industrial-size filter keeps it clean.

Gear Driven Hydraulic Pump

The main hydraulic system pump is wet gear driven. The gears continually run in transmission fluid, extending life and requiring no maintenance.

Larger Axle and Bearing Diameters

Extra large axles and bearings provide strength and durability for long life.



Crown Power Brake

Crown's standard Power Brake System delivers exclusive durability and performance advantages that virtually eliminate brake maintenance.

93%
Less Maintenance

The Crown Power Brake is almost fully enclosed, keeping dirt and debris out and practically eliminating the need for maintenance.

90%
Larger Brake Pad

Crown's full-circle friction disk is up to 90 percent larger than conventional drum brakes, resulting in one of the toughest, longest-lasting brakes on the market.

3X
Longer Lifespan

C-5 Series brakes adjust themselves and last three times longer than typical brakes – up to 10,000 hours for many customers.





Hot Problems Cool Solutions

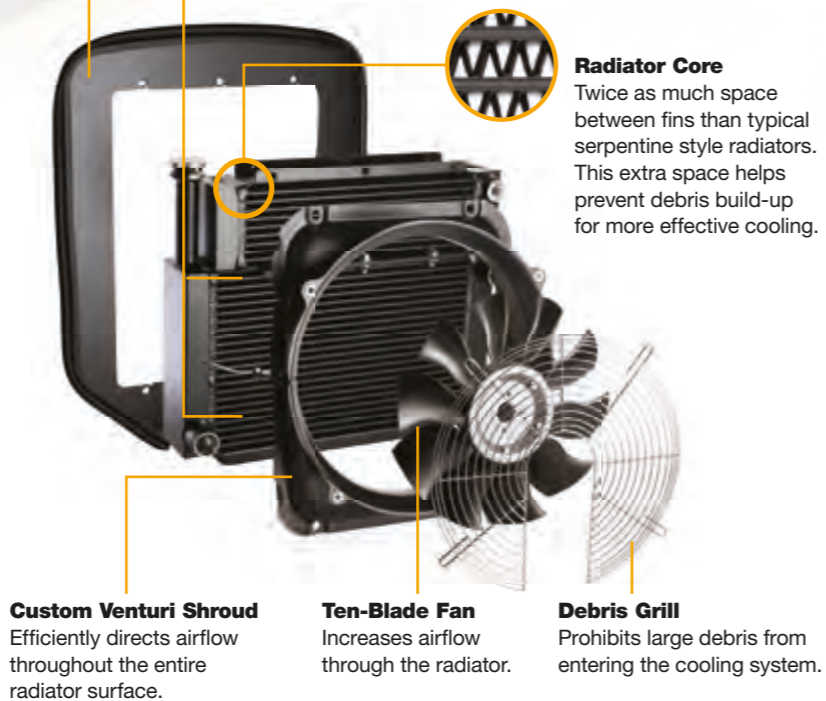
Overheating is one of the biggest threats to an internal combustion engine. Inefficient cooling can cause reduced performance, component damage or even total engine failure. That's why Crown developed a **standard** cooling system that cools the engine more efficiently, increasing truck performance and protecting long engine life.

With separate cooling for the engine and transmission and reduced potential for debris build-up, the C-5 Series provides better heat management to keep your trucks moving when the heat is on.

Recirculation Shield
Prevents hot air from reentering the radiator.

Dual Radiator
Provides separate cooling for engine and transmission, plus large openings and heavy-gauge aluminum for better airflow and durability.

Radiator Core
Twice as much space between fins than typical serpentine style radiators. This extra space helps prevent debris build-up for more effective cooling.



Custom Venturi Shroud
Efficiently directs airflow throughout the entire radiator surface.

Ten-Blade Fan
Increases airflow through the radiator.

Debris Grill
Prohibits large debris from entering the cooling system.



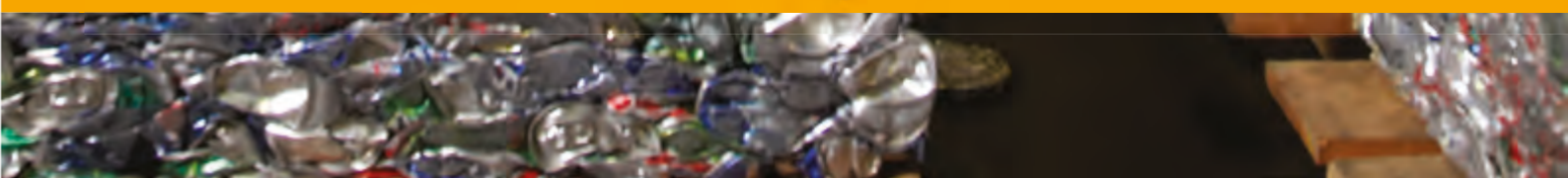
On-Demand Cooling™ Robust Option for High-Debris and High-Heat Applications

Crown's On-Demand Cooling System (ODC) combines Crown's standard dual radiator (see left) with an independent hydraulic driven fan for optimum cooling and clearing of debris.



For **COOLING FLOW**, the fan speed changes automatically to better manage engine and transmission temperatures. The fan has the ability to operate 30 percent faster at idle than an engine-driven fan for more cooling capacity.

With **CLEARING FLOW**, the fan automatically reverses to clear debris from the radiator.



Comfort, Confidence and Control

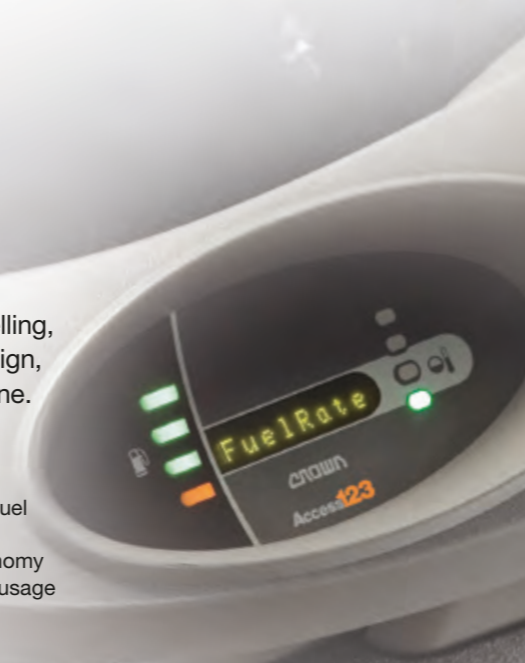
The C-5 Series' outstanding power is matched only by its superior driveability. Operators can count on smooth handling and ease in every action, whether travelling, turning, lifting or loading and unloading. Smart use of steel, operator-forward design, intrinsic stability and easy-access controls add up to help operators get more done.

Access 1 2 3[®] Comprehensive System Control

- Adjustable speed limits on every C-5 Series
- PIN codes enable operator-specific performance
- Onboard diagnostic, no handset required

eSmart™ Accurate Fuel Tracking

- Patent pending technology that monitors fuel pressure and temperature
- Industry-leading productivity for fuel economy
- Displays real-time, average and total fuel usage



Access and Visibility

Optimal operator positioning and design for all-around views and easy, rapid entry and exit.

Controls

D4 Armrest provides operators with excellent comfort and support. One-handed adjustment of height and fore/aft position allow for quick personalisation by operator.

Operator Space

Extensive leg and headroom, a spacious step and floorboard, a wide brake that requires 53 percent less effort and posts placed for comfort and visibility.

Optional Integrated Cabin

Door-mounted heater controls, adjustable vents, integrated reading lights, front and rear wipers, 2-way sliding windows and retractable sunshade.



Safety and Stability

Crown applied decades of expertise with counterbalanced trucks to ensure static and dynamic stability with the C-5 Series. The Crown Intrinsic Stability System™ combines engineering, manufacturing and integrated technology to proactively ensure optimal safety and performance.

Intrinsic Stability Features

More Mass

Greater mass in the right places equates to added strength and confidence. Crown uses extra steel where it matters most to make the C-5 Series stronger and more stable.

Dead-Engine Braking and Steering

C-5 Series trucks retain braking and steering functions if the engine shuts down unexpectedly.

Hill Hold

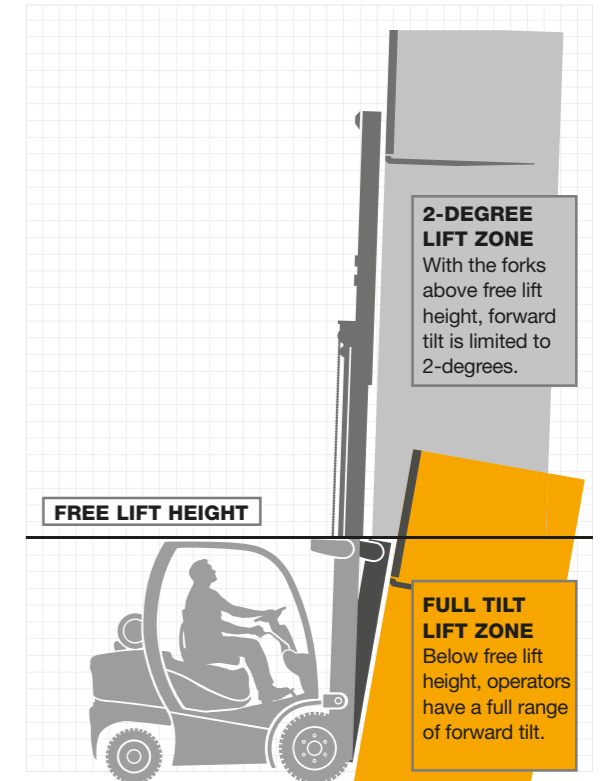
Crown's standard hill hold feature keeps the truck in place while in gear on a hill, without requiring constant pressure on the brake pedal.

Tilt Interlock and Speed Control

Crown Access 1 2 3 technology continually monitors the C-5 Series' degree of tilt, fork height and travel speed, limiting the possibility of a tip over.

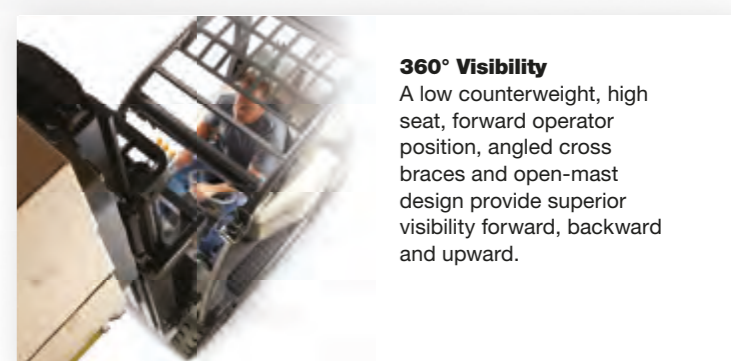
Stability Through Tilt Interlock

One of the biggest risks associated with counterbalanced trucks is tipping it over. The C-5 Series' Interlock System monitors tilt and height and automatically adjusts truck functionality to limit unsafe conditions and reduce the likelihood of a tip over.



I-Beam Stability

The C-5 Series mast outperforms in all three strength ratings: longitudinal and lateral stiffness and torsional resistance.



360° Visibility

A low counterweight, high seat, forward operator position, angled cross braces and open-mast design provide superior visibility forward, backward and upward.

Cabins

Crown offers fully enclosed hard cabin and soft cabin options to ensure operator comfort and convenience, even in the harshest conditions.

Versatility to Excel in Any Application

With super-elastic and cushion tyre models – plus dozens of options, attachments and accessories – the C-5 Series is more than a match for even the most demanding and specialised applications.



Carriage Options

Crown offers a variety of standard and wide carriage options to match application requirements.



Attachments

Crown designed the C-5 Series to work with a full range of attachments to handle any kind of load. Whether you need a rotator, push-pull, single-double, carton or paper roll clamp or more, the Crown C-5 Series can deliver.



Tyres

The C-5 Series can be equipped with cushion or super-elastic tyres; both are available in a wide-track configuration, while the super-elastic also offers a dual-tyre option.



Reverse Travel Handle/ Horn Option

In addition to a variety of Work Assist™ options, Crown's Reverse Travel Handle/Horn enables operators to comfortably grip the handle and conveniently access the horn in heavy reverse travel applications.

Robust Warranties Unprecedented Uptime

The Crown C-5 Series is engineered for uptime and backed by cost-saving, productivity-enhancing features including long-term warranties and a global support system. When it comes to lifetime value, Crown is the clear leader.



ODC Powertrain Warranty

Included on trucks with Crown's exclusive On-Demand Cooling System

Coverage includes:

- ▶ Engine
- ▶ Transaxle
- ▶ Radiator
- ▶ ODC Hydraulic Components



Standard Warranty

Coverage includes:

- ▶ Engine*
- ▶ Transaxle
- ▶ Radiator
- ▶ Chassis
- ▶ Access 1 2 3 Modules
- ▶ Power Brake

*Includes Water Pump, Alternator and Starter



Severe Duty Battery Warranty



More uptime for your money

Crown's integrated approach combines truck feedback and diagnostics, Crown-made parts and dedicated service teams to give you more uptime and a low total cost of ownership.



InfoLink is a wireless operator and fleet management solution that puts the power of accurate, up-to-date, business metrics right at your fingertips.



Crown's InfoPoint® Quick Reference Guide and on-truck component maps provide service engineers with vital information to quickly, accurately and easily resolve issues without additional wiring diagrams and schematics.



Crown's Integrity Service and Integrity Parts solutions ensure long-term truck performance by matching trained service engineers with Crown-made parts for long-lasting performance. That's a major difference with Crown.

Put The C-5 Series To Work For You.
Contact your local representative for a demonstration

Visit crown.com
See the C-5 Series



Crown Gabelstapler GmbH & Co. KG

Philipp-Hauck-Str. 12
85622 Feldkirchen, Germany

Tel +49(0)89-93002-0

Fax +49(0)89-93002-133

crown.com

Because Crown is continually improving its products,
specifications are subject to change without notice.

Crown, the Crown logo, eSmart, Access 1 2 3, Intrinsic Stability System,
Work Assist, InfoLink, InfoPoint and the ecologic logo are trademarks of
Crown Equipment Corporation in the United States and other countries.

Copyright 2014-2020 Crown Equipment Corporation
C5 BROCH GB 02/20, 10 – M01500-006-04
Printed in Germany



Clean Environment. Smart Business.

Printed on elemental chlorine free and
sustainably forested paper.

 twitter.com/crown_europe_en

 news.crown.com/uk/feed/