

CROWN

SC 5700 SERIES



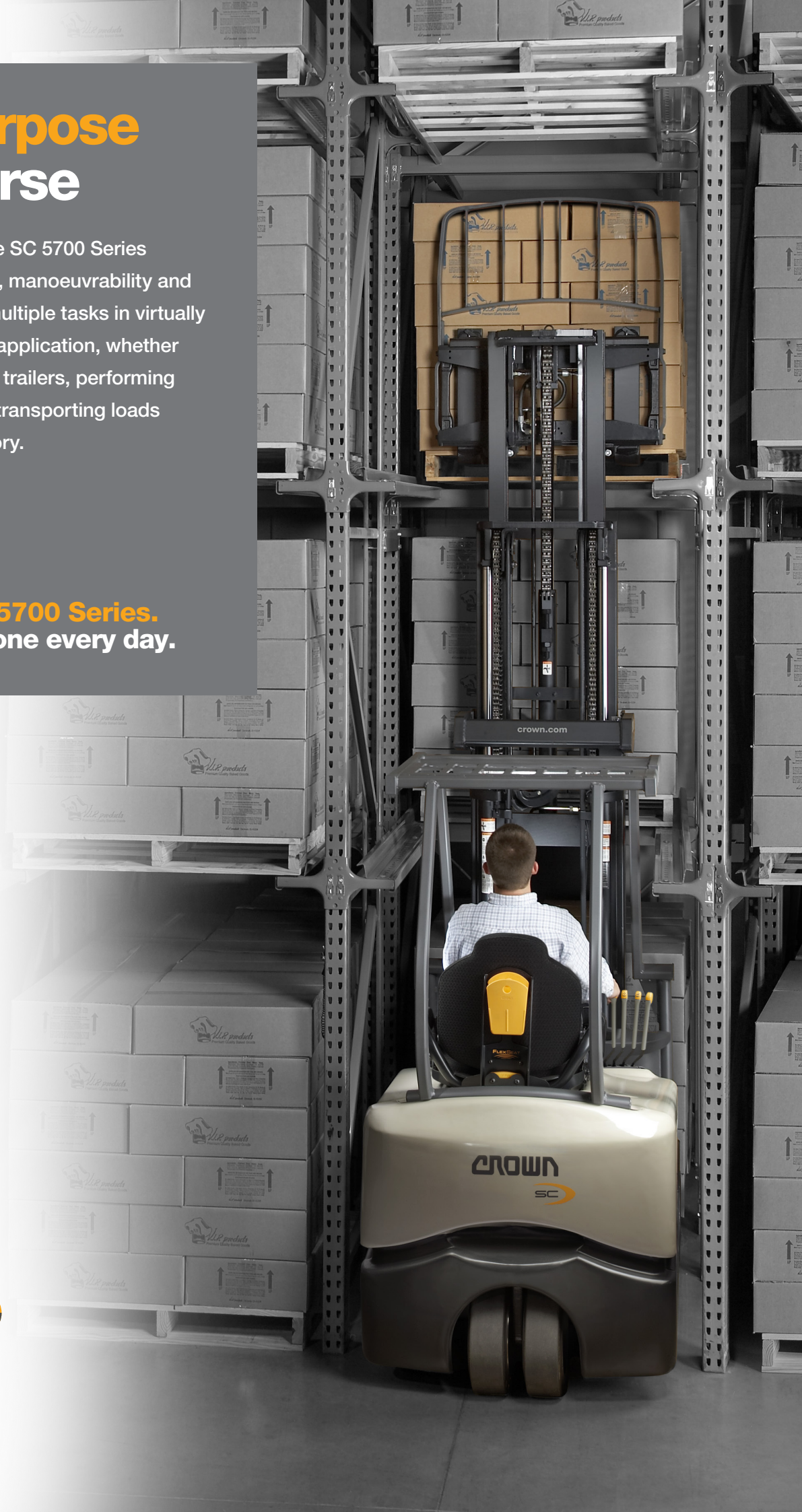
Multipurpose Workhorse

No matter the task, the SC 5700 Series provides the durability, manoeuvrability and precision to excel at multiple tasks in virtually any material handling application, whether loading and unloading trailers, performing dock and ramp work, transporting loads or replenishing inventory.

The Crown SC 5700 Series.
Getting more done every day.

Visit crown.com

See the SC 5700 Series



Productivity Redefined

Today's facility is challenged to do more with less, without compromise. The SC 5700 Series is versatile enough to manage nearly any material handling operation, while providing operator comfort and long lasting, reliable performance.



Versatility

The SC 5700 Series can eliminate the need for multiple types of lift truck in your facility, as it is able to handle dock work, transport and replenishment with ease.

Comfort

The features and components of the SC 5700 are designed and manufactured to provide comfort and ease of use for increased productivity.

Intelligence

Crown designs lift truck control systems to provide intelligent feedback to the operator and the service technician to ensure outstanding performance and uptime.

Reliability

Robust components designed and manufactured by Crown ensure that the SC 5700 is reliable in tough applications and strenuous environments.

Versatility

Flexibility to Handle Multiple Tasks

Increasing demands for productivity and profitability require a whole new level of adaptability and the ability to do more with less. Many applications in manufacturing, wholesale, retail, transportation and distribution require a lift truck that can handle a variety of specialised tasks.

The SC 5700 Series is able to do the work of multiple types of forklift, eliminating the need for extra equipment and ensuring that you'll get more from your lift truck investment.



Working in tight spaces

Doing more with less applies to warehouse storage as well, and requires the full use of every square inch in your facility. Narrow aisles and tight quarters are no match for the SC 5700 Series. Its optimised design and 68.5" (1,740 mm) truck length – the shortest in the industry – ensures that it can manoeuvre where no other three-wheel counterbalance forklift can.

	SC 5715		SC 5725				SC 5745			
Truck Capacity (lbs) (kg)	3,000	1,361	3,000	1,361	3,500	1,588	3,500	1,588	4,000	1,814
Truck Length (in) (mm)	68.5	1,740	72.8	1,849	73.0	1,854	77.2	1,960	77.2	1,960
Turning Radius (in) (mm)	54.2	1,377	58.5	1,486	58.5	1,486	62.7	1,595	62.7	1,595
Right-angle Stack (in) (mm) ^{†‡}	122.5	3,112	126.8	3,221	127.0	3,226	131.2	3,332	131.2	3,332

[†] Calculated with 48" (1,219 mm) load length and 6" (152 mm) clearance

[‡] Add 2" (51 mm) for sideshift

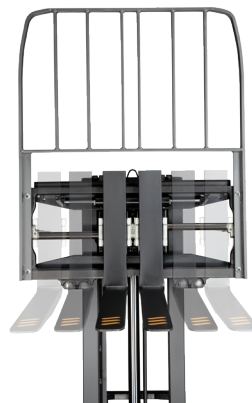
Customised to your application

Available in either 36 V or 48 V configurations, the SC 5700 Series provides power and precision to fit the task. Mast and tyre options, along with attachment versatility, allow operators to work safely and productively.



Tyre Options

Six tyre options, including regular and non-marking, cushion, lugged and solid pneumatic alternatives, are designed for use in a wide variety of environments.



Do more with attachments

The SC 5700 Series offers a wide range of mast options and attachments, including a quad mast, carton clamp, side shifters and more.

Comfort

Designed with the operator in mind.

It's simple: your forklift operators are a critical component of your operation's productivity. That's why Crown lift trucks are designed to optimise operator comfort and performance.

Easy entry and exit

The SC 5700 Series features easy entry and exit to help operators move quickly, safely and effortlessly. A low step height, contoured seat deck and convenient handholds ensure that operators can easily move on and off the forklift.



Crown FlexSeat

- Wide, durable, flexible seat for greater comfort.
- Replaceable components for easy maintenance.
- Inherent suspension absorbs shock and vibration.

Full-suspension seat (optional)

- Adjustable backrest and lumbar support.
- Operator weight adjustable.
- Fore/aft adjustable.



Comfortably in control

Operator comfort is further enhanced with well-positioned controls, arm and elbow support provided by the optional D4 Armrest, and available storage options that can be configured to the operator's preference.

- Manual controls are easy to reach and require low effort to activate.
- Optional D4 Armrest offers comfortable support to help reduce fatigue and can be combined with optional bionic controls that put lift truck functions within easy reach.
- Available Work Assist Accessories provide secure, customisable storage for tools and other regularly used items to help maintain a clean, organised work environment.
- Optional Tilt Position Assist (TPA) stops the forks in a horizontal position when requested.
- The automatic parking brake engages when the truck comes to a complete stop, eliminating the need for a separate brake lever.



D4 Armrest

Features easy, one-handed adjustment of up/down and fore/aft positioning. For use with manual levers or with one of four integrated bionic control options.

Fingertip

Intuitive control of hydraulic and truck functions with minimised hand movement.



Mini-lever

Variable spaced controls allow for precision movement with a pinch grip.



Dual-lever

Smooth blending of hydraulic functions with ample spacing of controls for glove use.



Combination lever

Well-spaced dual-lever for main operation and mini-levers for finer control of third and fourth functions.



Exceptional visibility

Drivers benefit from enhanced visibility to see people, objects and equipment easily.

- Cab-forward design places the operator closer to the work and allows unobstructed view of the forks and floor.
- Low, sculpted cowl, narrow, offset steering column and visibility-optimised mast provides a clear view of the forks and load.
- Overhead guard is designed to provide better upward sight lines to view loads at height.

Intelligence

Intelligence to work smarter

Stability isn't an afterthought with the SC 5700 Series. Operators appreciate Crown's Intrinsic Stability System, which proactively supports safety and efficiency.

On-board intelligence supports operators with automatic, real-time performance management and diagnostics to help ensure safe and efficient operation.

Cornering speed control

With its on-board intelligence, the SC 5700 Series knows the angle of the steer wheels and the speed of the truck, and uses this information to adjust travel speed while turning.

Travel speed control

The SC 5700 Series automatically limits travel speeds based on load weight, lift height and steer angle.

Intelligent ramp control

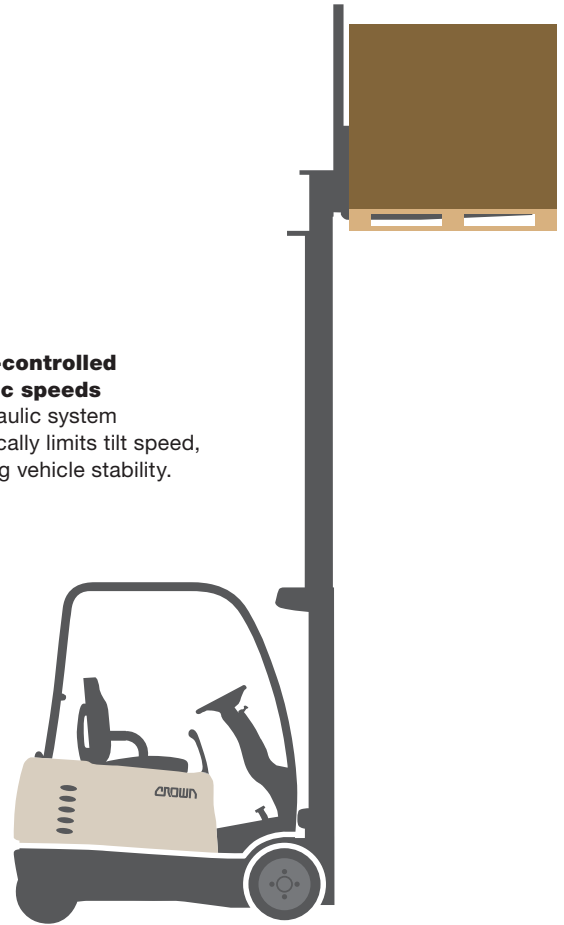
While on inclines, the SC 5700 Series keeps speed constant and automatically maintains position.

Tilt interlock

When forks and mast tilt more than two degrees forward, they are prevented from rising above free lift.

System-controlled hydraulic speeds

The hydraulic system automatically limits tilt speed, increasing vehicle stability.



Access 1 2 3 comprehensive system control

Like nothing else on the market, this system gives operators exceptional confidence with real-time monitoring and management of traction, braking, steering, hydraulics and other key truck systems. The truck constantly measures and interprets these factors, enabling the operator to concentrate on the task at hand. The system also helps maximise uptime by providing easy-to-use, on-board diagnostics to quickly pinpoint issues so corrective action can be taken.



InfoLink

The InfoLink wireless operator and fleet management system captures lift truck data, providing managers with the information they need to make knowledgeable decisions about OSHA compliance, truck impacts and energy usage.

Work is not an uphill battle with Crown power

- 36 V or 48 V traction.
- Intelligent control with Access 1 2 3 technology.
- Robust Crown motor with powerful torque.
- e-GEN braking for enhanced reliability and lower maintenance.



More than one way to move in two directions

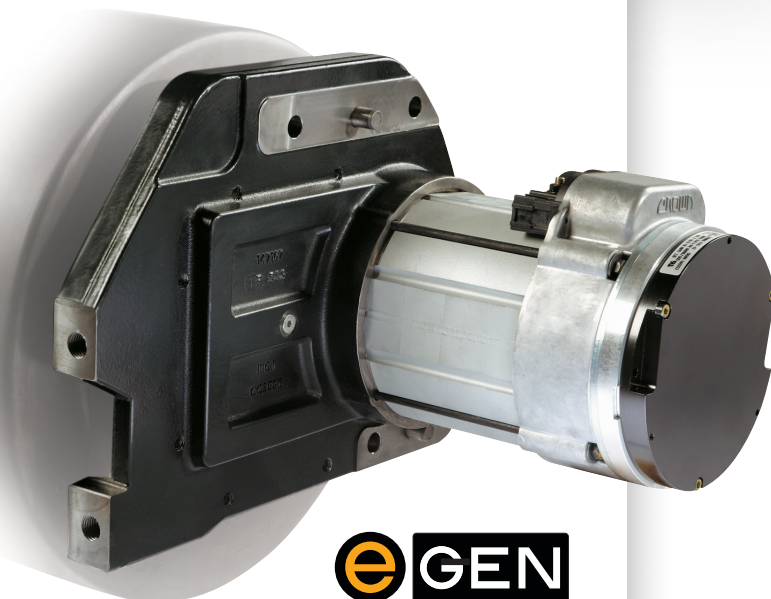
For additional speed and convenience, optional floor-mounted, foot-operated directional control pedals can independently control acceleration, speed and direction.



e-GEN Braking

e-GEN braking provides an edge in performance, service and cost of ownership by eliminating the traditional friction brake and features a comprehensive two-year warranty.

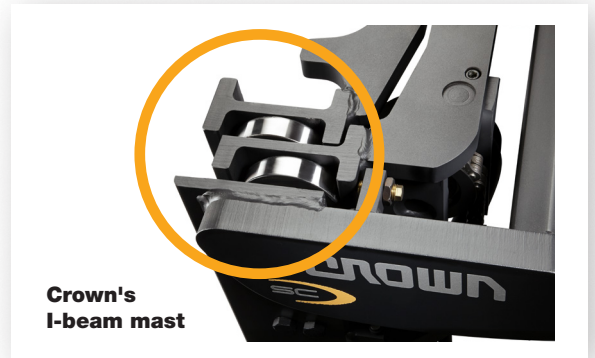
- Variable motor braking.
- Reduced pedal effort.
- Automatic parking brake.
- Fewer parts and wear points.
- Reduced maintenance requirements.



Reliability

Performance for the long haul

Crown's I-beam mast has been refined to provide smoother staging resulting in a reduction in noise and steadier load handling. To reduce mast rattle, four mast guides work in combination with four easily adjustable guide screws. Improved visibility through and around the compact mast design is achieved by strategic chain and hose routing.

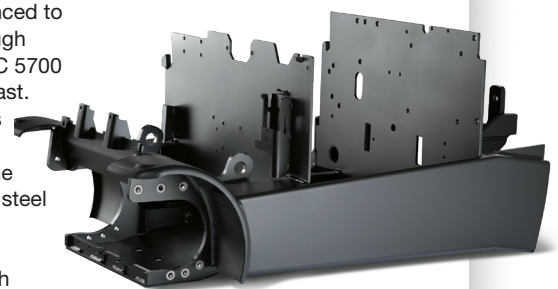


Heavy duty steer axle

A solid steel steer axle with sealed rack and pinion design and heavy duty tapered roller bearings provides strength and protection against contaminants for long-term durability.

Durable steel

With a strong and durable steel frame enhanced to hold up under tough conditions, the SC 5700 Series is built to last. Solid steel beams and steel plate form the backbone of the truck while steel cross-member supports provide additional strength and rigidity.

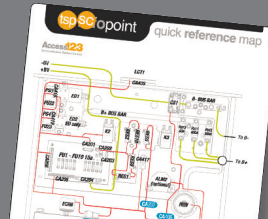


Crown designs and manufactures up to 85 per cent of its lift truck components, including key parts such as motors, drive units and electronic modules. Crown further proves its mettle with strong design and engineering, putting more steel where it's needed most. You can count on Crown for years of reliable, cost-efficient performance and low total cost of ownership.



More uptime for your investment

Crown's integrated approach combines truck feedback and diagnostics, Crown-made parts and dedicated service teams to give you more uptime and a low total cost of ownership.



Access123™

Access 1 2 3 technology enables advanced diagnostics through an intuitive display. This diagnostics system, used across all Crown trucks, increases technician proficiency, resulting in significant savings in service time and costs.

InfoLink™

InfoLink wireless operator and fleet management solution puts the power of accurate, up-to-date business metrics right at your fingertips.

SC infopoint™

Crown's InfoPoint on-truck component maps provide technicians with vital information to quickly, accurately and easily resolve issues without additional wiring diagrams or schematics.

INTEGRITY Service SYSTEM™

Crown's Integrity Parts and Service System solutions ensure long-term truck performance by matching trained technicians with Crown-made parts for long-lasting performance. That's a major difference with Crown.

The SC 5700 Series: getting more done every day.

Contact your local Crown dealer for a demonstration.



Visit crown.com

See the SC 5700 Series



Crown Equipment Corporation
New Bremen, Ohio 45869, USA
Tel. 419-629-2311
Fax +1 419 629 3796
crown.com

Crown is continually improving its products, so specifications are subject to change without notice.

Crown, the Crown logo, the colour beige, the Momentum Mark, Access 1 2 3, e-GEN, Intrinsic Stability System, InfoLink, FlexSeat, InfoPoint, Integrity Service System and the ecologic logo are trademarks of Crown Equipment Corporation in the United States and other countries.

Copyright 2011–2022 Crown Equipment Corporation
SF18608-EM Rev. 07-22
Printed in the USA.

ecologic[™]
Clean Environment. Smart Business.